



NEWSLETTER

Kia ora from the Principal



Kia ora everyone. Week 8 already! This last fortnight, we have been busy with Hockey Big Day Out and our Year 5-8 Pinnacles trip. Te Wahapū have enjoyed having the school to themselves while the older pupils have been away.

Thank you to Mr Thomson for organising and running two great EOTC opportunities for our learners.

Congratulations to our kapa haka performers at Music Picnic at the Point. We have received some lovely complements about your performance.

The Easter Raffle continues to build, with families asking for a second ticket to sell, having already sold their first! This year we need to increase our fundraising to help with the budget so every card sold helps. We will be selling tickets at Pauanui Super Value on Easter Saturday so send your visitors down by a ticket or two!

Thank you for supporting the Learning conferences. Sharing goals together with your child is an important part of the learning process and one that we value.

Have a great weekend.

Ngā mihi, Rachell



TOTARA Values

Congratulations to Aliyah and Regan who were recognised for their **ambitious** skills at the Hockey Big Day Out last week. Those are real olympic hockey shirts and ball!



KIA ORA FROM TE WAHAPŪ

How I feel about learning

Firstly a big welcome to Piper!
In class we have been preparing for student conferences, reflecting on what learning means for us. Here we chose a card to describe 'how we feel about learning'. *"When I am writing, I feel relaxed about learning because everyone is quiet and busy concentrating"* Sola. *"Every time I am learning something new I get a shock in my brain"* Hunter.



KIA ORA FROM TE MAUNGA

Reading Time!

Te Maunga reading groups meet together 9:00-9:45 Monday to Thursday. We are learning to read for information, developing our research skills, ask questions and pull out main ideas, recognising fact and opinion in non fiction text.

War In Waihi by Trinity

The 1912 Gold Miners strike

Introduction

The Problem
The miners voted to go on strike but eventually over months the strikers turned violent.

Background
The workers began to strike because they were working in dangerous and unsafe conditions with a low pay range.

The Facts

- The Strikers and their families had to live 7 months without a weekly pay packet.
- Martha mine has been dug for over 100 years.
- They worked long shifts around the clock 6 days a week.
- Martha mine was owned by shareholders who lived in Britain.


An Opinion

- Some workers felt that the union was taking things too far.

Research

More info
The expected violent uproar came on a Tuesday this day is now known as black Tuesday. The 12 hundred men who worked in the waihi mines had voted to go on strike. The whole town fell silent.

Over 60 strikers found themselves in prison, any 80 extra police officers patrolled the streets.



To guarantee their safety, mounted police had to escort the free labourers to and from work everyday.


Conclusion

What people say

- Many got miners cough
- Most New Zealand Politicians aren't any help.
- The whole town fell silent.

Vocabulary

- Accompanied
- Gradually
- Opposing
- Membership
- Improvements
- Disease



This is the martha mine. It is located at the end of Waihi's main road.



Monica creates a school map journey and designs a set of instructions using compass directions.

He Rahui- Opito Bay By Gabby and Ava-Jay

Introduction

The Problem
People have been taking too much tipa and not leaving some for the animals that feed on tipa

Background

- We are a country known for our clean beaches.
- People are concerned about the effects of pollution.
- But over the last five years the people of Ngati Hei and many other in the area have struggled to even find tipa.

An Opinion

Research

More info
Dredging is the main issue that is ruining the sea floor. Tupuna Maori always collected tipa by hand, and they took only enough for a feed, then, in the 1980s some big commercial fishing companies began to dredge large numbers of scallops to sell. They use a scraper with large metal teeth.

vocabulary

- Kaimoana
- Sedimentation
- Sustainability
- Commercial
- Dwindling
- dDedged

The Facts

- We are a country known for our clean beaches
- People are concerned about the effects of the pollution
- But over the last five years the people of ngati hei and many other since the area have struggled to even find tipa
- Our coastline is a very special place where people like to spend time and gather kimoana
- But they are especially worried about the problems over fishing


Conclusion

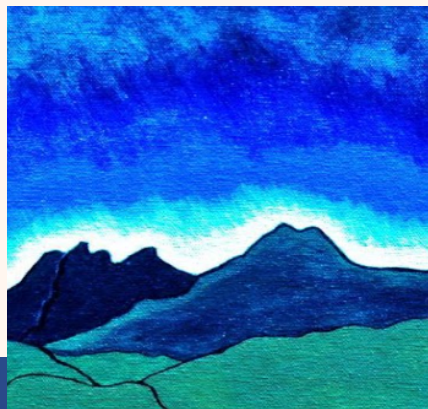
What happened?
Both sam and joe were saying in their words their opinion of people taking too much tipa and not leaving some for other animals here is some of it 'joe and sam want people to rethink their behavior when it comes to taking food' from the sea especially tipa"

Recommendations

- Make a sign that says do not take a lot of tipa.
- If there is not much tipa just take a few.

Meaning:
Dredging is when a metal cage drags along the seafloor





Te Maunga Maths:

This term we have continued to develop our strategies when solving problems using addition and subtraction. Next we will look again at mapping and location skills in our collaborative maths sessions.



2023 SURVEY RESULTS AND ACTIONS

Thank you to all who responded to our school survey in 2023.

Feedback from students, parents and staff has helped to set goals for this year's strategic plan.

Below is a summary of Strategic Plan goal three: Opportunities for our learners to be involved in the decision making process with regard to their learning.

The actions listed have come from the feedback you provided .

Strategic Goal Three

Future focused learning accessible to all

Objective A:

Develop relevant and engaging **local curriculum design** that provides the opportunity for students to make decisions with regard to their learning.

Rationale:

Our localised curriculum needs to reflect our school vision, values and our unique position in Aotearoa.

Annual Aims:

To develop teacher's ability to collaborate around student learning.

Targets:

To have student response in always and mostly for 2024.

Baseline data:

Rongohia te Hau survey:

Question 10: This year, in my classes, I have opportunities to make decisions about my learning.

Term 4 Maori pupil data 2023

Always: 18%
Mostly: 76%
Sometimes: 18%

Term 4 non Maori pupil data 2023

Always: 70%
Mostly: 15%
Sometimes: 15%



ACTIONS for 2024:

- Students involved in developing Hikuai School norms connected to our TOTARA values.
- Staff / whanau / student co-constructed localised curriculum.
- Termly opportunities to contribute to the next term integrated plan.
- Regular opportunities to choose resources, strategies and presentation of learning.
- Opportunities for Local EOTC ensuring all classes have choice and termly access
- Opportunities for local sport
- Opportunities for community service
- Students: share their process to show options, decisions and choices.



COMMUNITY:



**STORMS
CONTRACTING
EARTHMOVING & CARTAGE**

Waitomo
KIWIS FUELING KIWIS

Professional tree services
in your backyard.
We cover Tairua, Pauanui, Whitianga and more.
Tree shaping, view restoration, felling
and chipping, fruit trees and hedges,
consultations...we do it all!
For a free quote call Jon Roest on 0800 RBCUTS
0800 722 887 ArborCuts
arborcuts.co.nz TREE SERVICES

Course Options:
6km, 10km or 21km

G.J. Gardner. HOMES
WHITIANGA
RunFest
COROMANDEL PENINSULA SCHOOL KIDS RUN FREE
THANKS TO G.J GARDNER HOMES COROMANDEL!
SATURDAY 25 MAY 2024
www.whitiangarunfest.co.nz info@whitiangarunfest.co.nz @whitiangarunfest

**MENZSHED
PAUANUI**
www.pauanuicommunitymenzshed.co.nz
menzshed.pauanui@gmail.com

Thank you

**BUNNINGS
warehouse**



Creative Images
BY Paul C Schrader

**DAY CAMP
MERCURY BAY**

Are you looking for a fun and meaningful way to volunteer? Join the Mercury Bay Day Camp as an Adult Helper! You'll have the opportunity to make a positive impact on our children's lives while they enjoy many EPIC activities at the camp.

When: 1 or all 3 days
Tuesday 16th - Thursday 18th April

register at - daycamp.co.nz/adult-volunteers

who have been and are coming to Mercury Bay Day Camp
Registrations are open for 2024 @ daycamp.co.nz/teen-leaders

When:
15 April Teen Training Day
16 - 18 April Full Camp

- Fun ✓
- Friendship ✓
- Challenge ✓
- Adventure ✓

#Tag a Friend



JOIN THE FUN - ENROL TODAY!

Pauanui Pre-School

Pauanui Pre-School is a community based, not for profit early childhood centre that offers a high quality, dynamic programme in a homelike environment for children aged 0 to 6 years.

LIMITED SPACES AVAILABLE NOW

We would love to get to know you and your family, please phone or pop into the centre any time and have a chat with our friendly teaching team.

www.PAUANUIPRESCHOOL.CO.NZ 07 8647754



Predator Free Pauanui
Community Catch-up Coffee Morning
Saturday 30th March 2024 10am-12 noon
Pauanui Hub Meeting Room

Join us on Easter Saturday for coffee and a chat:

- How is your trapping going?
Do you need any help or questions answered?
- Would you like some traps?
We have some available and can demonstrate how they operate
- Trap Lines
Volunteer to monitor one
- Project Updates
Find out about our current projects and fundraising goals

This will be a casual, drop-in event, however for catering purposes it would be helpful to receive indications of interest by Thursday 28th March, so feel free to RSVP to pfpauanui@gmail.com





What's Happening?



March 2024

| | |
|------|--|
| 24th | BOT meeting |
| 26th | Learning Conferences |
| 28th | Iron Kid- Hikuai School Triathlon |
| 29th | Easter Friday |

April 2024

| | |
|----------|---|
| 1st-2nd | Easter Monday and Tuesday |
| 4th-5th | EPro 8 Competitions for Year 5&6 and 7&8 teams |
| 8th-12th | BOOK WEEK- see Dojo app for event details |
| 11th | TOTARA Assembly 2:00pm |
| 12th | Last day of term- Happy Holidays Everyone! |

Next T.O.T.A.R.A Assembly : Thursday 11th April at 2:00pm All welcome :)

Kapa Haka at Music Picnic at the Point

