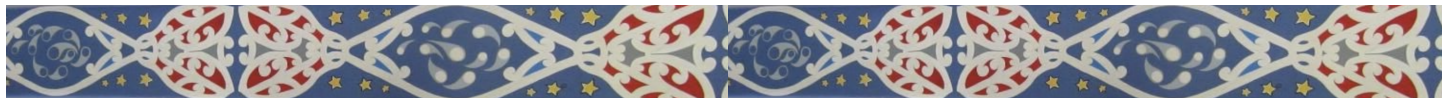


# HIKUA SCHOOL NEWSLETTER



19th May 2023

Follow us on [www.hikuai.school.nz/](http://www.hikuai.school.nz/) or [www.facebook.com/hikuaischool/](https://www.facebook.com/hikuaischool/)



## Kia ora from the Principal



Kia ora everyone. The term is flying by with lots of hands-on practical learning experiences for our tamariki. Room 3 has begun soil testing, investigating what is in our soil in readiness for preparing the ground for planting the sensory garden. Room 4 has begun looking at flight, experimenting with design and aero-dynamic shape. Room 5 have researched possible science fair topics and are in the process of selecting an investigation. A great time was had by all at Opoutere Forest last Friday. Thanks to all our parents and families for supporting this mahi. Room 5 is out and about each week making connections. We have visited Tairua Library where we have our writing on display and Opoutere School for Kapa Haka. Sport with Tairua has been rained off however we hope for better weather this week as we visit and connect through winter sport opportunities.

Ngā mihi, Rachell

## EOTC Opportunities

Great to see our learners developing cooperation and teamwork skills last Friday.





# Friday Art Class Sessions

Our Friday art sessions have developed skills in drawing, geometric shape, composition and now painting. We are learning to blend and use brushstroke. Here we are at work on our Matariki art pieces that will be on display for the festival in Week 10.



## MATARIKI RAFFLE!

**Week 4:** Our large shade sail is needing an upgrade. (it has rips across the top and is on its last legs!) We have received a generous donation for half and now need to fundraise for the rest. We will be putting together a Matariki Hamper and will sell raffle tickets for it. We hope that our whole school community will get behind this and help by selling **10 raffle tickets** to friends, family or neighbours (a card with 10 tickets for \$5 each - if you can sell more GREAT!) Tickets will be coming home **Friday 19th May** along with a list of hamper ideas. Tickets need to be sold and returned to school by **Friday 16th June**. We will sell tickets over 2 weekends at Tairua, Pauanui and at the Hunting Competition.- help with this would be appreciated.  
**The raffle will be drawn on Friday 30th June.**

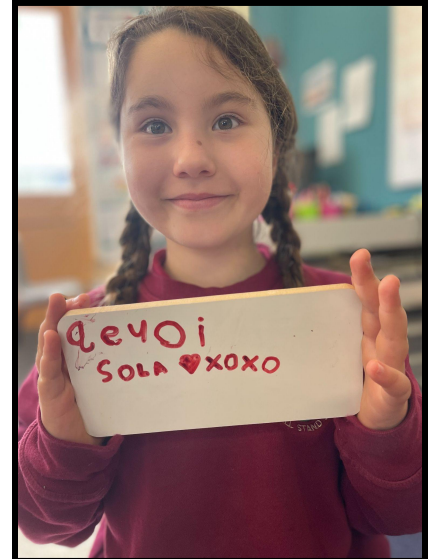
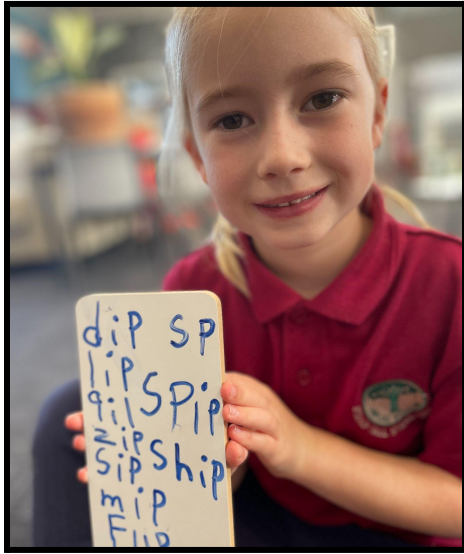


TE IWA O  
**MATARIKI**

Thanks for helping us look after our school.



# Room 3



Our Room 3 Community has been busy creating word chains during our literacy time together. We are either learning or consolidating our knowledge of consonants and vowels and the correct sounds vowels make.

We are testing soil to find out what soil is actually made of and what it needs to be healthy. At this stage we are comparing the soil of our class and sensory garden.

Curiosity is a popular word in our learning environment. Our 'wonder wall' is fast filling up and added to daily spontaneously by the children. Come and take a look and feel free to add your own wonderings.

During our Friday Transition to School Programme for our New Entrants we explored natural resources from Opoutere Forest. Our class created buildings and houses for fairies and have taken them home. Did any fairies come to visit, I wonder?



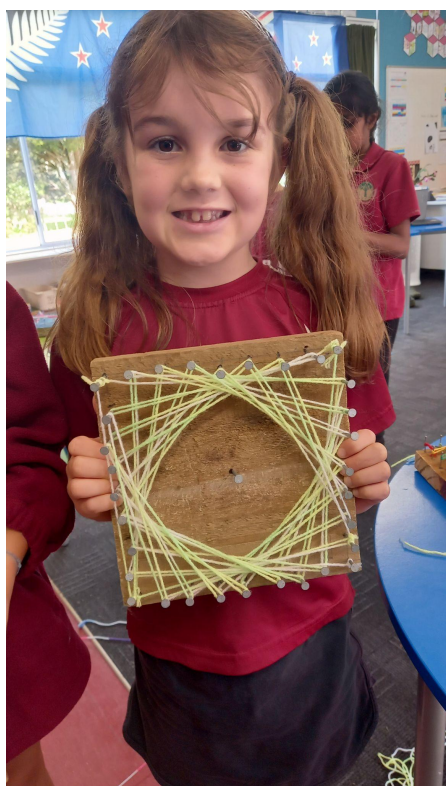
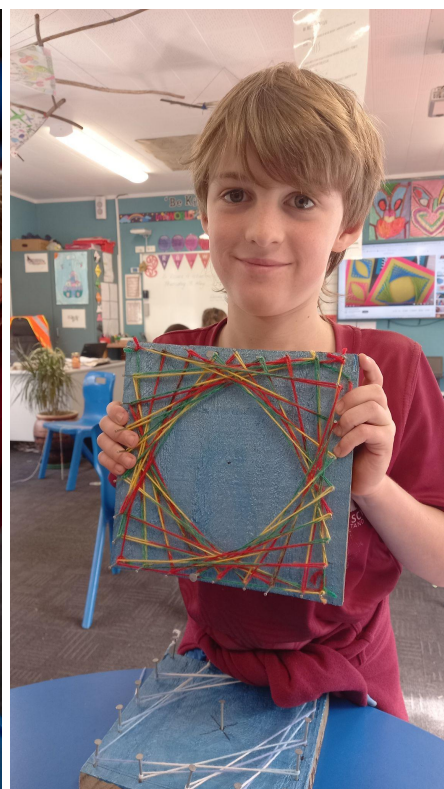
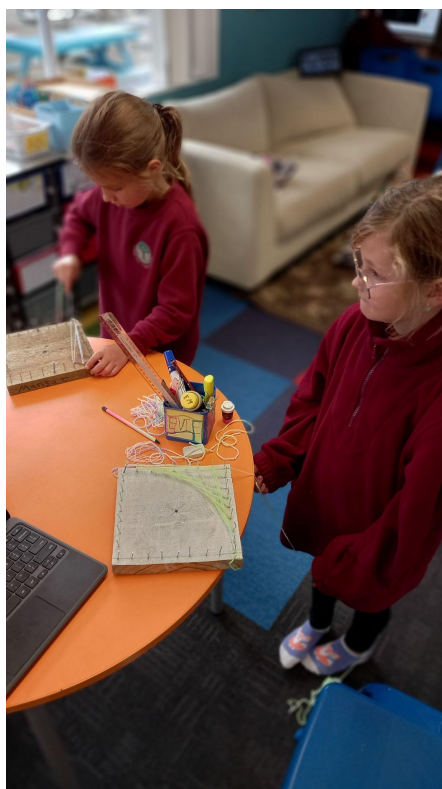
A huge thank you to Lodge Whitianga 443, for their kindness in including Hikuai School in their veggie pod loan system, giving us the opportunity to learn about nature and the ability to grow our own food.



# Room 4

When asked what they would like to learn about in Geometry next, the children voted to create an artwork using shapes.

We looked online for ideas and stumbled across 'String Art'. The creation of the boards required lots of measurement, as the students plotted where their nails would need to go. After much hammering the boards were ready for wool. The technique we employed is called Curve Stitching; the creation of curves by use of straight lines.





## Room 5

We have been reading journal articles about science topics and asking each other probing questions. Next week children will be choosing an inquiry question for their Science fair assignment that will be displayed at Matariki festival on Thursday 29 June.

Room 5 have also been completing tests for mid year assessments and setting goals for the rest of the year. It has been pleasing to see progress, especially in Reading. We will be posting work on Class Dojo to display improvement of goals set at the beginning of the year.

Last Thursday afternoon we went to Opoutere School and joined in their Kapa Haka practice. We were welcomed by the students and enjoyed participating in waiata and haka.



Food technology has continued for Year 7 children. They have made scones, Anzac biscuits, hot cross buns and apple turnovers.

On Tuesday 16 May a group attended the NYLD in Hamilton. They listened to inspiring speakers and enjoyed games, hip hop dancers and a song by Georgia Lines.



# UPCOMING SCHOOL EVENTS

Here are some dates that we already know about for Term 2.  
More will be added as they come to hand.

## Term 2 May 2023

<b>Leadership:</b>	<b>The Room 5 Team begins sessions with Tairua and Opoutere Schools</b>
<b>Kapa Haka</b>	<b>Tuesdays 9:00-9:45 with Matua Brandon weather and roads permitting!</b>
<b>15-16th</b>	<b>National Young Leaders Day- Room 5 team -Hamilton</b>
<b>19th</b>	<b>Pink Shirt Day- Dress in pink- gold coin donation for the Mental Health Foundation</b>
<b>22nd-26th</b>	<b>Mid Year Assessment Week</b>
<b>25th</b>	<b>TOTARA Assembly: 2:00 in the M.P Room</b>
<b>26th</b>	<b>Trees for Survival Planting Day- Rooms 4 and 5</b>

## Term 2 June 2023

<b>Leadership:</b>	<b>The Room 5 Team sessions with Tairua and Opoutere Schools continue</b>
<b>Kapa Haka</b>	<b>Tuesdays 9:00-9:45 with Matua Brandon weather and roads permitting!</b>
<b>1st</b>	<b>WHOT Winter sport Tournament- Years 5-8</b>
<b>5th</b>	<b>King's Birthday Monday</b>
<b>6th</b>	<b>Teen Esteem Day Room 5</b>
<b>14th</b>	<b>Mid Year Progress Reports go home</b>
<b>22nd</b>	<b>TOTARA Assembly: 2:00 in the M.P Room</b>
<b>23rd - 25th June</b>	<b>Hikuai School Hunting Competition</b>
<b>29th</b>	<b>MATARIKI FESTIVAL 5:30pm -7:30pm</b>
<b>30th</b>	<b>Last day of Term 2</b>



# COMMUNITY NEWS, EVENTS and SUPPORTERS

## THANK YOU TO:

Martyn and Lesleigh (Marisa and Billie's grandparents), have donated \$3,000 towards the big shade sail replacement and \$1,000 towards the school pool for future maintenance! Wow, we are very grateful for the support.

The Crawford Family for fixing the potholes in the driveway- Thanks Fred and Shirley!

### Hikuai School Pig Hunting Competition Fundraiser

⚡ TICKETS LIVE ⚡ our tickets are live for our comp!  
Follow the link below or in our bio. If you have any issues - give Stacey or Kristy a text/call!

<https://events.humanitix.com/hikuai-school-pig-hunting...>



**humanitix**



Hikuai School Pig Hunting Comp 2023

Date and time  
Fri 23rd Jun 2023, 12:01 am - Sun 25th Jun 2023, 2:00 pm  
NZST  
Add to calendar

Location

**Church At The Beach Pauanui**  
Welcomes You To Our  
**Celebration!**

#### King's Birthday Weekend

##### Screening of

*The Gospel According To Matthew*  
Sat 3rd June 4.45pm - 9.30pm  
Dinner will be served 6.45pm

Sunday 9.30 - 4th June

Special Celebration Service With Invited Guests  
Tree Planting & Lunch - bring a plate

Monday 5th June

Family Fun Day Picnic

Kennedy Park 10am - 1pm

Lots of Games - Corn Hole, Petanque, Quoits & more

Childrens Sack Races, 3-Legged, Egg & Spoon

Lolly Scramble

Participate or watch.

Bring Your Own Picnic

**Waitomo**  
KIWIS FUELING KIWIS

**Mark Spiers Roofing Ltd**

Mobile: 027-477-6177 Office: (07) 865-7304

**STORMS**  
**CONTRACTING**  
EARTHMOVING & CARTAGE

Professional tree services  
in your backyard.

We cover Tairua, Pauanui, Whitianga and more...

Tree shaping, view restoration, felling and chipping, fruit trees and hedges, consultations...we do it all!

For a free quote call Jan Roest on 0800 RBCUTS

0800 722 887 **ArborCuts**  
arborcuts.co.nz TREE SERVICES

**JOIN THE FUN - ENROL TODAY!**



Pauanui Pre-School

Pauanui Pre-School is a community based, not for profit early childhood centre that offers a high quality, dynamic programme in a homelike environment for children aged 0 to 6 years.

LIMITED SPACES AVAILABLE NOW

We would love to get to know you and your Family, please phone or pop into the centre any time and have a chat with our friendly teaching team.



[www.PAUANUIPRESCHOOL.CO.NZ](http://www.PAUANUIPRESCHOOL.CO.NZ) 07 8647754

**MENZSHED**  
**PAUANUI**

[www.pauanuicommunitymenzshed.co.nz](http://www.pauanuicommunitymenzshed.co.nz)  
[menzshed.pauanui@gmail.com](mailto:menzshed.pauanui@gmail.com)